

Update on the development of the Somerset Integrated Care System

Lead Officer: Mel Lock

Author: Jonathan Higman, Chief Executive, NHS Somerset

Contact Details: jonathan.higman@nhs.net

Cabinet Member: Cllr Heather Shearer

Division and Local Member: All

1. Summary

1.1. This paper provides an update on the development of the Somerset Integrated Care System (ICS) and the establishment of the Integrated Care Board for Somerset (NHS Somerset) which took on the statutory accountabilities from the NHS Somerset Clinical Commissioning Group from 1 July 2022. A more detailed overview is provided in the attached presentation which will be used as the basis of discussion on the day of the meeting.

2. Issues for consideration / Recommendations

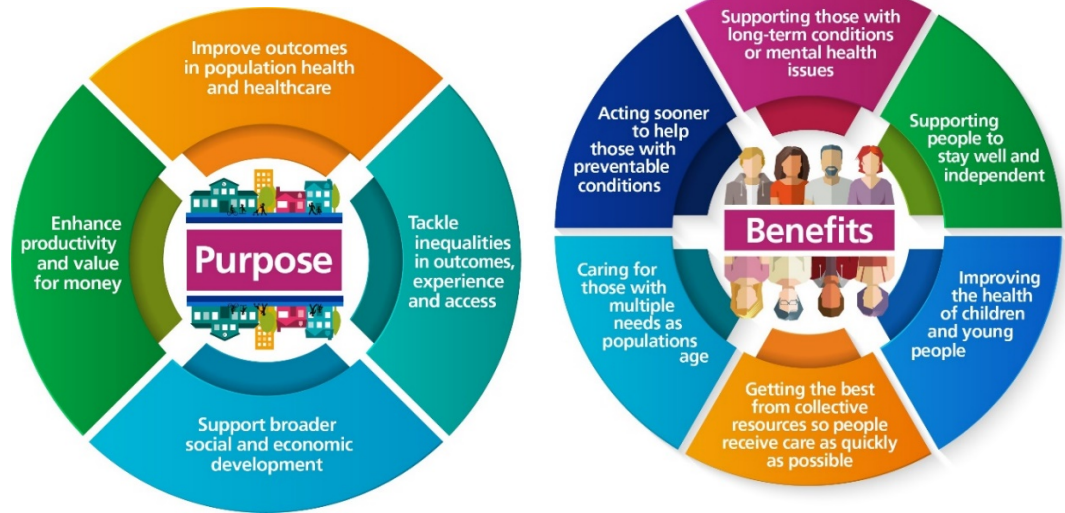
2.1. To provide members with an overview of the Somerset Integrated Care System, including the roles and responsibilities of NHS Somerset, the governance arrangements for the Somerset ICS and the establishment of the Integrated Care Partnership (ICP), which is the statutory committee to be established between the Council and the ICB to lead the development of an integrated care strategy for Somerset.

3. Background

3.1. Integrated care systems (ICSs) are partnerships that bring together providers, commissioners and the voluntary, community and social enterprise sector across a geographical area ('system') to collectively plan health and care services to meet the needs of their local population, in line with four key aims to:

- **improve outcomes** in population health and healthcare
- **tackle inequalities** in outcomes, experience and access
- enhance **productivity and value for money**
- help the NHS support broader **social and economic development**.

The purpose and anticipated benefits of Integrated Care Systems are summarised in the schematics below:



- 3.2. The Health and Care Bill introduced changes that brought Integrated Care Systems into statute from 1 July 2022. It introduced two-part statutory ICSs, comprising of an Integrated Care Board (ICB), responsible for NHS strategic planning and allocation decisions (the public name for which is NHS Somerset), and an Integrated Care Partnership (ICP), jointly established by the local authority and the ICB, responsible for bringing together a wider set of system partners to develop a plan to address the broader health, public health and social care needs of the local population.
- 3.3. Joint working arrangements have been in place at a system level for some time and putting ICSs on a statutory footing is consistent with the journey we had started in Somerset.
- 3.4. Somerset has a relatively low-complexity system configuration, with a smaller number of statutory health and care organisations, when compared to other areas. This will be beneficial as we develop as an ICS. Our plans ensure that we use this to our advantage as we develop the governance arrangements for the Somerset ICS to maximize efficiency and effectiveness while building on the progress we have made in working collaboratively across our system. A more detailed overview will be presented on the day of the meeting.



4. Consultations undertaken

4.1. Not required, but engagement is taking place across the system.

5. Implications

5.1. The Somerset Clinical Commissioning Group closed down on 1 July 2022 and has been superseded by the establishment of the Somerset Integrated Care board (NHS Somerset).

5.2. At its meeting on 10 November, the Health and Wellbeing Board (HWBB) supported a recommendation to establish a close working relationship with the ICP. The detailed governance, membership and terms of reference is currently under development with the ambition that the ICP is established from September 2022.

6. Background papers

6.1. Integrating care – next steps to build strong and effective integrated care systems across England.

6.2. Health and Care Bill

6.3. Integrated Care Partnership I(ICP Engagement Document: Integrated Care System Implementation

Note For sight of individual background papers please contact the report author